



SECONDARY SHREEDER (RASPER)

WWW.FABHIND.COM

Fabhind Pvt Ltd is a Leading Manufacturer & Exporter of Crumb Rubber Plants, Waste Tyre Recycling Plants & Recovered Carbon Black(RCB) Plants in India.

**DESIGNED TO SHRED TYRES CHIPS INTO AROUND
20 MM RUBBER MULCH INTO AROUND 4 TONS PER HOUR.**

Company Introduction

FABHIND Pvt Ltd has been designing and manufacturing for recycling industry over 20 years, specialized in designing Tyre recycling solution and manufacturing Tyre shredding machinery with advanced US technologies. Fabhind Uses Its Experience And Success To Continually Improve The Design And Manufacturing Of Our Tyre Recycling Systems To Make Them More Effective And Efficient Throughout The Reduction Process.

Project details:

Fabhind FRM Plant Is Designed By Fabhind Technical Team, Efficient And Durable, To Produce Wire Free Rubber Mulch.

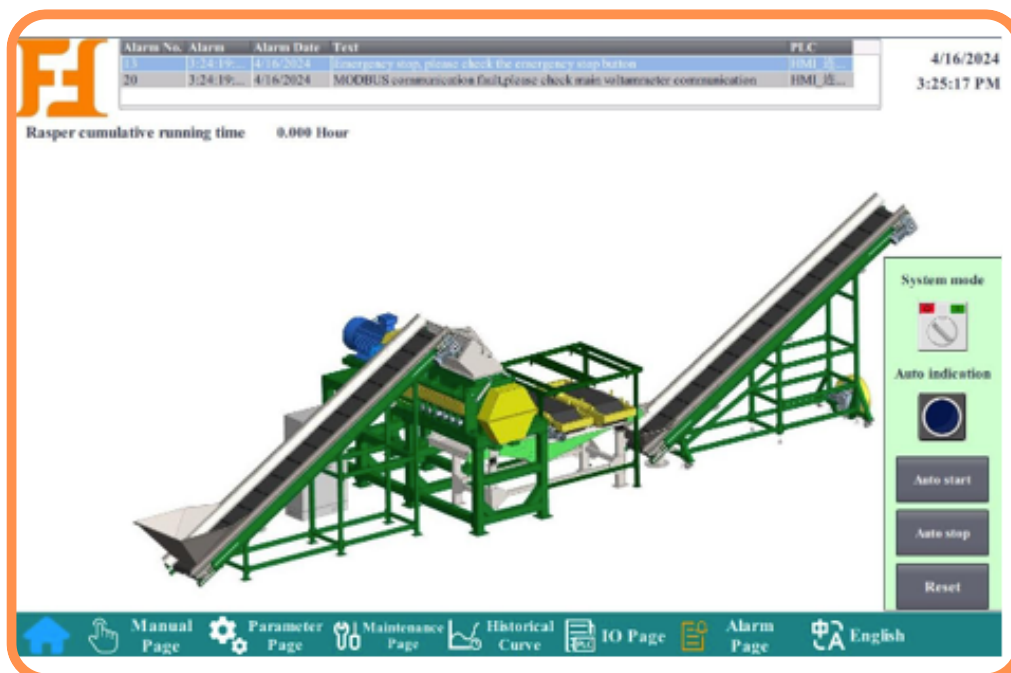
Pre-condition for Tyre Recycling System FAB-FRM-315,

Input: Shredded Rubber Chips, The Size Is 50-200 MM.

Output: Around 20 MM Wire Free Rubber Mulch

Capacity: Around 4 T/h.

G.A. Drawing



Equipment List:

Feeding Conveyor : 4Kw Load The Tyres Into Rasper.

Rasper : 315Kw Rasper To Reduce To Around 20–25mm And Separate Steel Wire Out.

Vibratory Conveyor : 1.5kw*2 Make The Material To Dispersive. This Is Stainless Steel, It Is Helpful For Magnet Separation.

Magnet Separator : 1.5kw To Attract The Steel Wire Out From Rubber Chips.

Conveyor : 3Kw To Load The Wire Free Mulch For Collection.

Control System : Siemens/Delta Plc Control The Whole Line.

Size Requirement:

The Required Size For The Equipment As Well As For The Plant Should Be As Following, Also Plant Or Equipment Size Requirement Can Be Changed According To Clients' Site Constrain

Equipment Size Required: As Per Drawing, The Size For The Fabhind Recycling Line (L*w*h) Should Be 19137 mm*6305 mm*4432 mm. The Real Size Will Be A Little Different After Manufacturing According To The Actual Condition.

Plant Size Suggested: We Suggest Customer Workshop Length Should Be Around 30–40m, Width Should Be Around 10–15 M, And Height Should Be Around 6–7m. The Plant Should Be Around 300–600 Square Meters.

Power Requirement: The Total Nominal Power Will Be Around 328 Kw, In The Working Process, The Average Electricity Consumption Will Be Around 190 kwh (Units) In One Hour.

Note: The Power Consumption Will Be Different Regarding To Different Working Condition.

Workforce Requirement:

- 1 Plant Manager
- 1-2 Operators Per Shift
- 1 Maintenance Technicians Per Shift

Note: More People May Be Needed Depending on Each Plant's Needs.

Component Introduction

1. Motor: Siemens or standard Motor
2. Reducer: Standard Brand
3. Bearing: SKF OR ZKW
4. Control System: PLC, Siemens and Schneider Component

Technical Specification Crumb Rubber Secondary Rasper Machine :

Fabhind Rasper Machine Is The Ultimate Machine For Mid-stream Grinding And Steel Separation. It Is Specially Designed To Take Pre-shredded Tyres Chips And Produce Between 25–12mm (1"–0.5") Wire Free Rubber Chips. Another Unique Feature Of This Machine Is The Ability To Turn The Knives Once Before Having To Send Them To Be Sharpened Or Replaced, Minimizing Operating Costs.

PLANT PHOTOS



EQUIPMENT LIST

- Feeding Belt Conveyor
- Rasper Machine
- Vibration Motor
- Belt Magnetic Separator
- Discharge Belt Conveyor
- Swing wheel
- Rasper Hydraulic Station Oil Pump
- Rasper Repair Motor Attachment
- Dust Collector Valve
- Rasper Hydraulic Station Junction Box
- Rasper Hydraulic Station Junction Box
- Rasper Water Cooling Valve
- Rasper Emergency Stop Button Box
- Dust Collector Controller Power Supply

Control System Operation Guide

Item	Control Object	Power	Voltage / Frequency	Qty	Control Method	Equipment Id
1	Feeding Belt Conveyor	3kw	415v/50hz	1 Set	Vfd	Com001
2	Rasper	315kw	415v/50hz	1 Set	Soft Started	Rsm001
3	Vibration Motor	1.5kw	415v/50hz	2 Sets	Dol	Vbtsm001 Vbtsm002
4	Belt Magnetic Separator	1.5kw	415v/50hz	1 Set	Dol	Msm001
5	Belt Magnetic Separator	1.5kw	415v/50hz	1 Set	Dol	Msm002
6	Discharge Belt Conveyor	5.5kw	415v/50hz	1 Set	Dol	Com002
7	Swing Wheel	2.2kw	415v/50hz	1 Set	Vfd	Swm001
8	Rasper Hydraulic Station Oil Pump	3kw	415v/50hz	1 Set	Dol	Opm001
9	Rasper Repair Motor	7.5kw	415v/50hz	1 Set	Dol	Opm002

FABHIND PVT LTD

CORPORATE OFFICE & UNIT - 1

Plot no.16, Khodiyar Estate, Near Shakriba Estate, Phase IV, Vatva, GIDC, Ahmedabad- 382445, Gujarat, India.

UNIT-2

Survey No. 98 & 92/2, Near Heavy Metal Tubes, Mehsana-Ahmedabad Road, At. Mandali Mehsana 384130 Gujarat, India.

T : +91-89800 14614 / 640

E : info@fabhind.com | sales@fabhind.com